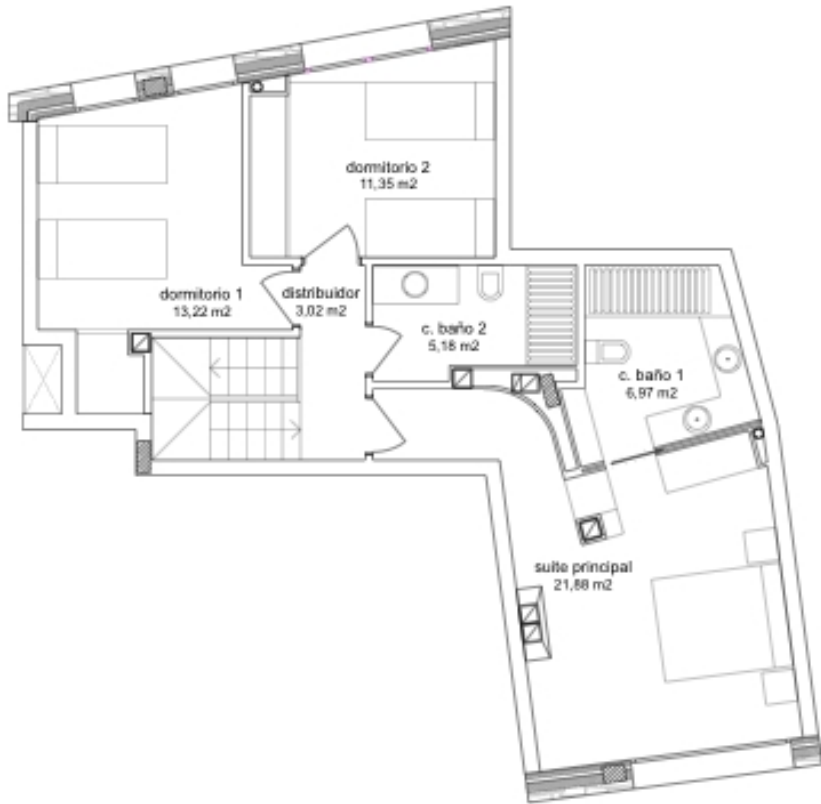




| | | SUP. UTIL | SUP. CONSTRUIDA |
|--------------|-----------------------------|-----------------------------|----------------------------|
| PLANTA C | lavadero | 1,57 m ² | |
| | salón-comedor | 33,74 m ² | |
| | cocina | 7,64 m ² | |
| | vestibulo | 4,09 m ² | |
| | aseo | 2,47 m ² | |
| | cortavientos | 1,94 m ² | |
| | PLANTA C total | 51,44 m² | 64,14 m² |
| PLANTA D | dormitorio 1 | 13,22 m ² | |
| | suite principal | 21,88 m ² | |
| | c. baño 1 | 6,97 m ² | |
| | c. baño 2 | 5,18 m ² | |
| | distribuidor | 3,02 m ² | |
| | dormitorio 2 | 11,35 m ² | |
| | PLANTA D total | 61,62 m² | 79,92 m² |
| TOTAL | 113,85 m² | 144,06 m² | |



VIVIENDA B1-PC/2
 PLANTA BAJA DEL DÚPLEX
 ESCALA 1/100



VIVIENDA B1-PC/2
PLANTA PRIMERA DEL DÚPLEX
ESCALA 1/100